



The Diocesan Board of Education

RE News



Welcome to this new edition of RE News! At this halfway point of the year, we hope you find lots of ideas and resources to inspire you inside.

This edition shares all the news from the biggest annual national RE event, Strictly RE, which is hosted by the National Association of Teachers of RE (NATRE). It also introduces shares information about resources you might like to use as part of your RE curriculum.

As ever, if you have anything to share in the next edition of RE News, please do get in touch. I look forward to hearing from you!

Gillian Georgiou

Diocesan RE Adviser

gillian.georgiou@lincoln.anglican.org



Inside this issue

| | |
|--|---|
| Strictly RE 2024..... | 2 |
| Interfaith Day: Emmaus Federation | 4 |
| Exploring Worldviews: Using Case Studies | 5 |
| Regional RE Networks... | 6 |
| RE resources and support | 7 |
| Upcoming professional development | 8 |

Special points of interest

- Celebrating excellent practice in RE
- The latest news and views from around the country
- Exciting new resources to support you in the classroom

Strictly RE 2024

At the beginning of spring term, hundreds of RE teachers, leaders, advisers and academics got together for the biggest annual national RE event.

The two-day virtual conference came at the end of a week of evening seminars that explored a huge range of topics relating to RE, including developing challenge in secondary RE, playful approaches to building vocabulary in primary RE and developing religiously and ethically literate young people.

The Strictly RE conference included three keynotes: the first was delivered by Lat Blaylock, reflecting on his 40 years teaching RE and supporting RE leaders. The second heard from the Worldviews Project team looking ahead to the launch of their curriculum materials on May 2nd this year. The final keynote panel discussed the diversity of Christian worldviews, including the richness and diversity of Orthodox Christianity, diverse artistic representations of Jesus and the global nature of Christianity.

Surrounding these keynote sessions were a wide range of seminar opportunities. These included practical examples of crafting an RE curriculum across a MAT, developing hermeneutics (textual interpretation) in the primary classroom, focusing on

pupils' personal knowledge and utilising adaptive learning strategies in RE, amongst many other options.

One of the most powerful aspects of this annual conference is the opportunity to get together with other RE teachers and leaders from across England and Wales. It is reassuring to know that teachers across the country and asking the same kinds of questions and facing the same sorts of challenges. Attending Strictly RE is a fantastic chance to get practical advice and guidance; all the keynote sessions and seminars continue to be available for a year after the event, so even if you couldn't make it, you can still access the recordings. You can find out more [here](#).

We know that having the chance to get together can make all the difference for RE teachers and leaders. For that reason, we will be hosting our first RE conference in a number of years on June 25th 2024:

Religion and Worldviews: Inspiring Curiosity.

Look out for booking information in the next few weeks!



“We know that having the chance to get together can make all the difference for RE teachers and leaders...”

RE and Worldviews: Inspiring Curiosity

We are really excited to welcome RE teachers and leaders from across the region to join us at The Showroom, Lincoln, for our RE conference, **RE and Worldviews: Inspiring Curiosity**. This is the first time in several years that we have been able to bring RE teachers together and we would love to see all of you there!

We will be welcoming a number of keynote speakers and workshop leaders, including Shammi Rahman, the Race Equality Adviser for HFL Education. Shammi has eighteen years' experience teaching and leading RE. She will be sharing her experience of teaching RE and ensuring that the RE curriculum includes the rich and diverse lived reality of religion and belief. We will also be welcoming speakers from [Humanists UK](#), [God and the Big Bang](#), the [RE Hubs](#), [Inclusive Judaism](#) and [Empowering Voices](#). The Diocesan RE Adviser and Associate Diocesan RE Advisers will also be there, sharing their experience and advice.

The conference is aimed at both primary and secondary RE teachers and leaders and it is open to everyone. You can find out more on our website [here](#).



Questions for Reflection

What opportunities do we have for professional development in relation to RE?

What are our key priorities in RE this year and next?

Why and how might it be helpful to connect with other RE teachers and leaders?

INTERFAITH DAY: EMMAUS FEDERATION

We have had a wonderful Interfaith Day to further deepen understanding of different faith groups so that children can better understand how to be 'agents of change' by caring for the world around them and understanding more about what it means to be a courageous advocate.

After learning about Christian beliefs about the natural world, the children in Reception created their own Hedgehog Hotel for their Forest School, cared for the environment around them by litter picking, made Creation displays and planted broad bean seeds. The children in Year 1 used Godly Play and drama to deepen their understanding of the Creation Story told though the Book of Genesis. Children in Year 2 used their learning to imagine their own Muslim naming ceremony (Aqiqah). Children in Year 3 and some from Year 4 turned their classroom into a mosque and carried out their own Adhan. Some children in Year 4 and children in Year 5 researched different charities and became their own agents of change through promoting the work of their own nominated charity through discussion and debate, including taking part in Christian Aid's 'paper-bag game'. Some children in Year 5 and the children in Year 6 researched the artistic religious features of St. Mary's Church and sketched the stained-glass windows, focusing on a stained-glass window in the church by Henry Thomas Bosdet called 'Resurrection'. Back at school, they created their own stained-glass windows and used their learning to create artwork inspired by 'The Road to Emmaus', which links with our school vision.

We were fortunate that our Bishop's Visitor, Jean, was on hand to support the day and we were delighted to have been joined by Revd. Eyre and Revd. Canon Sudharshan Sarvananthan. All in all, it was a deeply engaging, interesting and thought-provoking day which was enjoyed by all the children, staff and visitors!

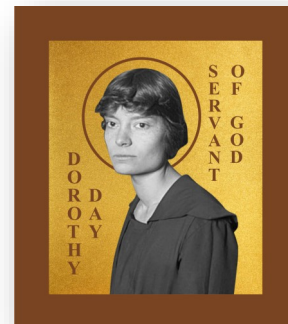
Claire Collett, Executive Head



EXPLORING WORLDVIEWS

As more schools move towards taking a worldviews approach to RE, I am increasingly asked for support in identifying appropriate case studies for the classroom. Using case studies supports teachers to ensure that their teaching is rooted in the fact that worldviews start with people, whilst also providing opportunities to build in disciplinary questions and skills.

In this edition of RE News, we are going to look at the case study of Dorothy Day and consider how this could be used in both primary and secondary settings.



Who was Dorothy Day?

Dorothy Day (1897-1980) was an American journalist and social activist. She was brought up in an Episcopal Christian family and grew up seeing examples of the ways in which Christians responded to social need and injustice, particularly after the San Francisco earthquake in 1906. Day was active in the suffragette movement in the early years of the twentieth century. In 1924, she converted to the Catholic faith. Inspired by fellow Catholic social activists, who in turn drew inspiration from St Francis of Assisi, Day co-founded the Catholic Worker Movement in 1933. This included the publication of the *Catholic Worker*, which Day edited until her death in 1980. The articles in the *Catholic Worker* drew from Catholic belief, teaching and tradition, drawing attention to the poor working conditions of women and African American workers in particular. However, it did not always align with traditional Catholic doctrine, for example, promoting pacifism over just war.

| Primary RE | Secondary RE |
|--|---|
| <p>Use the case study of Dorothy Day to find out more about Christian beliefs about God, human beings and social action.</p> <p><u>Possible activities</u></p> <p>Use the case study of Dorothy Day as a way into learning about the Roman Catholic Church—key beliefs, teachings, traditions. This could include learning about St Francis of Assisi—asking questions about who he was, where and when he lived, what is surprising about his life and how he lived out his (Catholic) Christian beliefs.</p> <p>Focus on: timeline, geography, asking questions and analysing information about the ways in which Day lived out her Catholic beliefs in the context of her time.</p> | <p>Use the case study of Dorothy Day to find out more about Christian beliefs about human beings, equity, diversity and social action.</p> <p><u>Possible activities</u></p> <p>Use the case study of Dorothy Day as a way into learning about different Christian responses to equality, equity, diversity and inclusion. Make links with biblical and Catholic teachers on social equity and equality, e.g. the Vatican’s 2023 repudiation of the ‘doctrine of discovery’.</p> <p>Consider ways in which Day’s social activism was religiously and politically motivated, and discuss the intersection between these two things.</p> <p>Focus on: utilising questions and methods from the human and social sciences to analyse Day’s Catholic social activism.</p> |

RE NETWORKS

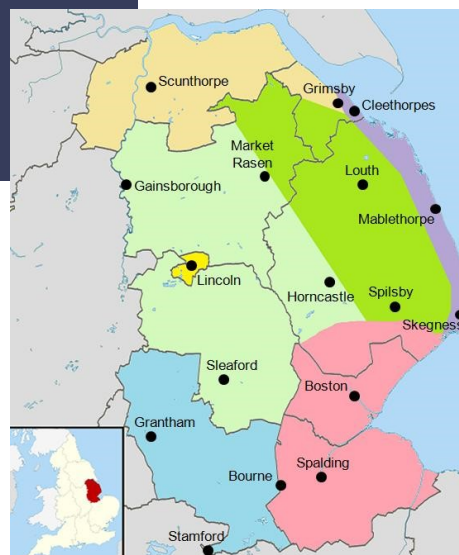
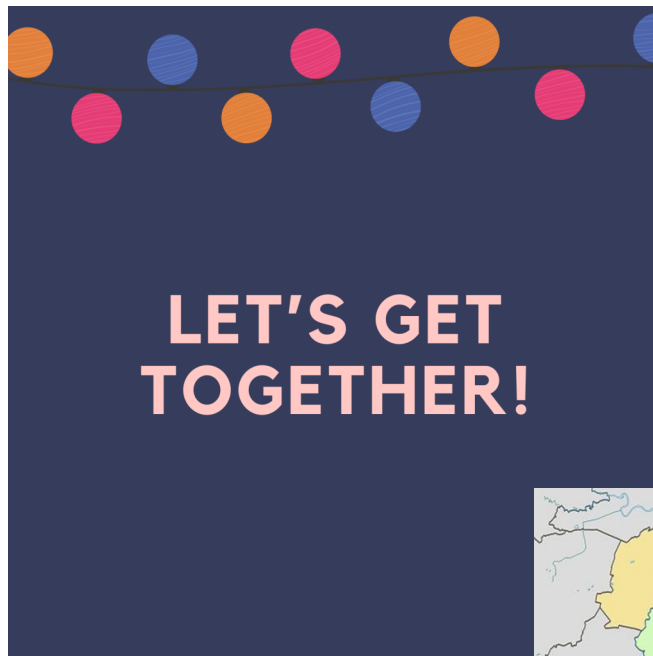
We are really lucky to have a number of different RE networks in this region working to support RE teachers and leaders.

For teachers across Lincolnshire, North Lincolnshire and North East Lincolnshire, the Diocesan RE Adviser runs termly virtual meetings on a range of topics and questions. These meetings are affiliated with NATRE: you can find out more about them [here](#); alternatively, you can contact Gillian directly at gillian.georgiou@lincoln.anglican.org.

For teachers and leaders based in Lincolnshire, there is also an RE hub based at Bishop Grosseteste University in Lincoln that meets regularly in person; to find out more about this group, contact Rosie Simons at r.simons@williamfarr.lincs.sch.uk.

For teachers and leaders based in North Lincolnshire, Catriona Card and Sally Brooman have recently re-established the North Lincolnshire Primary NATRE group. This group meets once a term in person. To find out more, contact Catriona at c.card@berkeleyprimary.co.uk.

For teachers and leaders based in North East Lincolnshire, Julie Childs and Katherine Bruning have re-established the North East Lincolnshire RE Group. This group meets once a term in person. To find out more, contact Julie at jchilds@utterbyprimaryacademy.org.





RE RESOURCES AND SUPPORT

The Institute for Jewish Policy Research has published the findings from its most recent National Jewish Identity Survey. This report contains lots of information about the lived reality for Jewish people across the UK today. [Their website](#) includes both the report, along with key statistics and videos.



The Bible Society has a range of resources aimed at KS2 and KS3 pupils. This includes fact files on different genres of writing in the Bible, Christian festivals and practices, and Christian responses to key ethical issues.



Gillian Georgiou has produced a [professional development resource](#) that enables you to reflect on the assessment practices used in your context. The resource includes an introduction to current research and thinking in this area, a series of video interviews with teacher researchers including scaffolded questions for reflection, and samples of the teaching and assessment activities, along with examples of pupils' work and the teacher researchers' professional reflection.



Founded on David McCandless, *Information is Beautiful* produces visualisations of key data and knowledge. [This visualisation](#) of Buddhism includes key concepts, schools of thought and global diversity.



Upcoming Professional Development Opportunities

| Date | Time | Training |
|-----------------|-------------|--|
| 23rd April 2024 | 1.30pm—3pm | RE Cluster Meeting Virtual Session |
| 25th June 2024 | 10am—3.30pm | Religion and Worldviews: Inspiring Curiosity The Showroom, Lincoln |

The Diocesan RE Adviser is happy to carry out bespoke training on:

- ⇒ RE subject leadership
- ⇒ Types of knowledge in the RE curriculum
- ⇒ RE subject knowledge (religious and non-religious worldviews)
- ⇒ Developing disciplinary knowledge in RE
- ⇒ RE and assessment
- ⇒ A worldviews approach to RE

She is also able to work alongside RE subject leaders to carry out RE reviews and provide RE curriculum support in schools, academies and MATs.

For more information, see our 2023/4 service level agreement [here](#) and our 2023/4 MAT partnership agreement [here](#).

For further details, please email the Diocesan RE Adviser at gillian.georgiou@lincoln.anglican.org.

To book, please see our [website](#).